



PAKISTAN NOTICES TO MARINERS

WEEKLY EDITION 08

Notice: 32 – 36/24

24 FEB 2024

Copies of these Notices can be obtained gratis from Mercantile Marine Department and PN Chart Depot / NAVAREA IX Headquarters, 11 Liaquat Barracks Karachi. The same can be downloaded from web: hydrography.paknavy.gov.pk.

CONTENTS

- I NOTICES TO MARINERS**
- II REPRINTS OF RADIO NAVIGATIONAL WARNINGS**
- III CORRECTIONS TO SAILING DIRECTIONS**
- IV MARINE INFORMATION**

Mariners are requested to inform the National Hydrographic Office, Naval Headquarters, 11 Liaquat Barracks, Karachi, Pakistan, immediately on the discovery of new dangers, or suspected dangers to navigation and of changes or defects in aids to navigation noticed in NAVAREA IX and of shortcomings in PAK charts or publications.

Tel : + 92-21-48506151
+ 92-21-48506152
Fax : + 92-21-99201623
+ 92-21-35867737

E-mail : hydrokp@paknavy.gov.pk
hydrpk@gmail.com

Web : hydrography.paknavy.gov.pk.

MUHAMMAD WASIM
Captain Pakistan Navy
Dy HoP

National Hydrographic Office, Naval Headquarters, 11 Liaquat Barracks, Karachi 75530, PAKISTAN

PART – I
NOTICES TO MARINERS

32/24 KUWAIT - Marine farms. Buoy.

BA Chart 1214 (Panel, Mina Ash Shuwaykh) [*previous update 409/21*] WGS84 DATUM

Insert		
		<i>Fl.Y.4s</i>

29° 23′.90N., 47° 54′.89E.
29° 24′.06N., 47° 55′.09E.
29° 24′.30N., 47° 55′.38E.
29° 24′.27N., 47° 55′.43E.

BA Chart 1214 [*previous update 409/21*] WGS84 DATUM

Insert		
--------	---	--

29° 23′.90N., 47° 54′.89E.
29° 24′.06N., 47° 55′.09E.
29° 24′.30N., 47° 55′.38E.

Source: Admiralty Notice to Mariners No. 780/2024

33*/24 UNITED ARAB EMIRATES - Buoyage. NM Block.

BA Chart 3177 (INT 7222) [*previous update 295/24*] WGS84 DATUM

Insert	the accompanying block, centred on:	24° 36′.0N., 54° 25′.5E.
--------	-------------------------------------	--------------------------

BA Chart 3713 (INT 7223) [*previous update 2904/23*] WGS84 DATUM

Insert		<i>Fl.Y.5s SMP-1</i>	24° 32′.61N., 54° 24′.03E.
		<i>Fl.Y.5s SMP-2</i>	24° 33′.18N., 54° 23′.84E.
		<i>Fl.Y.5s SMP-3</i>	24° 33′.99N., 54° 23′.55E.
		<i>Fl.Y.5s SMP-4</i>	24° 34′.83N., 54° 23′.27E.
		<i>Fl.Y.5s SMP-5</i>	24° 35′.67N., 54° 22′.98E.

BA Chart 3715 (INT 7224) [*previous update 3217/23*] WGS84 DATUM

Insert		<i>Fl.Y.5s SMP-1</i>	24° 32′.61N., 54° 24′.03E.
		<i>Fl.Y.5s SMP-2</i>	24° 33′.18N., 54° 23′.84E.
		<i>Fl.Y.5s SMP-3</i>	24° 33′.98N., 54° 23′.56E.
		<i>Fl.Y.5s SMP-4</i>	24° 34′.83N., 54° 23′.27E.
		<i>Fl.Y.5s SMP-15</i>	24° 33′.61N., 54° 26′.25E.

Source: Admiralty Notice to Mariners No. 785*/2024

34*/24 UNITED ARAB EMIRATES - Fish haven.

BA Chart 3177 (INT 7222) [*previous update 785/24*] WGS84 DATUM

Insert		24° 32′.55N., 54° 18′.63E.
--------	---	----------------------------

BA Chart 3713 (INT 7223) [*previous update 785/24*] WGS84 DATUM

Insert		24° 32′.55N., 54° 18′.63E.
--------	---	----------------------------

BA Chart 3715 (INT 7224) [*previous update 785/24*] WGS84 DATUM

Insert		24° 32′.55N., 54° 18′.63E.
--------	---	----------------------------

Source: Admiralty Notice to Mariners No. 846*/2024

35/24 SUDAN - Legend. NM Block.

BA Chart 675 (Panel C, Marsa Esh Sheikh Ibrahim) [*previous update New Edition 14/07/2016*] WGS84 DATUM

Insert the accompanying block, centred on: 18° 52′.7N., 37° 25′.3E.

BA Chart 675 (Panel A, Marsa Esh Sheikh Ibrahim to Talla Talla Saqir) [*previous update New Edition 14/07/2016*] WGS84 DATUM


Delete legend, Works in progress (2016), centred on: 18° 52′.47N., 37° 23′.99E.

Source: Admiralty Notice to Mariners No. 877/2024

36/24 PAKISTAN - Buoy. Light-beacon.

BA Chart 59 (INT 7316) (Panel, Approaches to Phitti Creek) [*previous update 4474/21*] WGS84 DATUM

Insert  Fl(3)G.7s No.3 (a) 24° 34′.68N., 67° 04′.07E.

Delete  Fl(3)G.7s No.3, close NE of: (a) above

Source: Admiralty Notice to Mariners No. 824/2024

PART – II
RADIO NAVIGATIONAL WARNINGS

072/24. Cancel Navarea IX 372/23, 457/23 and this msg. Operation completed.

073/24. ARABIAN SEA. Oman. Orange life boat length 8.5m with ships call sign V7NU4 reported adrift in vicinity of position 18-30.7N 061-15.1E. Mariners cautioned. Cancel this message 211500 UTC Feb 24.

074/24. RED SEA. Saudi Arabia. Charts BA 158, 2658 and 2659. Firing practice will be conducted from 20 Feb to 22 Feb 24 between 0600 – 1200 UTC daily in area bounded by following coordinates:

- 21-06.00N 038-58.50E
- 21-05.58N 039-07.00E
- 21-13.40N 038-58.50E
- 21-13.50N 039-06.20E

Mariners cautioned. Cancel this msg 221400 UTC Feb 24.

075/24. ARABIAN SEA. Pakistan. Charts PAK 33, 57 (INT 751), BA 38 and 707. Live depth charge firing will be conducted from 191900 till 211900 UTC Feb 24 in area bounded by following coordinates:

- 24-10.00N 062-45.00E
- 24-10.00N 063-30.00E
- 23-20.00N 063-30.00E
- 23-20.00N 062-45.00E

Mariners cautioned. Cancel this msg 212100 UTC Feb 24.

076/24. SOUTHERN GULF. UAE. Charts BA 2443, 2887 and 2889. Semi-Submerged unlit wreck reported in vicinity of position 25-11.64N 054-10.12E. Mariners cautioned.

077/24. RED SEA. Eritrea. Chart BA 452. Unmanned cargo vessel reported anchored (unlit) in position 12-53.00N 043-09.00E. Mariners cautioned.

078/24. GULF OF OMAN. Oman. Charts BA 2851, 2858, 4705, Oman Charts OM 1, 1214, 1215, 3505. Live missile firing will be conducted from 250400 to 251400 UTC Feb 24 in area bounded by following coordinates:

- 24-25.00N 057-40.00E
- 24-10.00N 058-25.00E
- 24-05.00N 058-25.00E
- 24-00.00N 058-39.00E
- 23-51.50N 058-20.00E
- 23-51.30N 058-06.00E
- 24-09.00N 057-40.00E
- 24-18.00N 057-40.00E

Mariners cautioned. Cancel this msg 251600 UTC Feb 24.

079/24. Following buoys operational:

RAZ 07 27 41.38N 049 22.40E
 RAZ 12 27 40.00N 049 20.65E
 RAZ 21 27 36.93N 049 16.20E
 RAZ 37 27 33.54N 049 11.57E

Cancel Navarea IX 062/24 and this msg.

080/24. SOUTHERN GULF. UAE. Charts BA 2889 and 3179. East Ghasha channel buoy EG-04 at position 24-27.31N 052-41.67E reported unlit. Mariners cautioned.

081/24. ARABIAN SEA. Pakistan. Charts PAK 33, 57 (INT 751), BA 38 and 707. Missile and gunnery firing with live ammunition will be conducted between 0400 to 1700 UTC daily on 24 and 25 Feb 24 in area bounded by following coordinates:

24-24.30N 066-42.00E
 24-19.00N 066-58.00E
 24-00.00N 066-39.00E
 24-11.00N 066-27.00E

Mariners cautioned. Cancel this msg 251900 UTC Feb 24.

082/24. Temporary mooring buoy No 1 located east of Yas Channel relaid in position 24-22.05N,052-39.01E. Cancel Navarea IX 039/24 and this msg.

083/24. SOUTHERN GULF. Dubai. BA Charts 2837, 2851, 2858, 2887 and 2888. Offshore sailing race (20 sailing boats length 27 to 50 feet) will be conducted from Dubai 25-11.24N, 055-12.28E to Muscat 23-35.18n, 058-36.64e via Musandam along the coast from 240900 UTC to 290500 UTC Feb 24. Another sailing race will be conducted from 290900 UTC Feb 24 to 021600 UTC Mar 24 from Muscat 23-35.18N, 058-36.64E to Khasab 26-12.76N, 056-15.04E. Boats will return to Dubai from 01 to 05 Mar 24 using same route. Mariners cautioned. Maintain listening watch on VHF channel 16.

084/24. SELF CANCELLING. Navigational warnings inforce:

2021 series: 109, 224, 397, 399, 445, 448, 490 and 491.

2022 series: 027, 039, 067, 095, 102, 112, 185, 198, 220, 227, 294, 295, 311, 328, 331, 358, 443, 477, 480, 483, 489, 497, 501, 505, 506, 507 and 513.

2023 series: 025, 028, 034, 058, 067, 068, 070, 071, 094, 096, 102, 103, 110, 111, 116, 120, 124, 131, 135, 138, 159, 177, 190, 201, 221, 226, 237, 245, 263, 266, 284, 293, 299, 307, 314, 315, 318, 326, 338, 340, 341, 346, 355, 359, 371, 376, 378, 398, 404, 410, 412, 415, 420, 430, 435, 437, 439, 447, 448, 453, 455, 460, 462, 464, 467, 468, 472, 473, 475 and 476.

2024 series: 004, 007, 010, 011, 012, 029, 030, 033, 034, 035, 037, 038, 042, 043, 045, 047, 048, 050, 057, 058, 063, 067, 076, 077, 078, 080, 081 and 083.

COASTAL WARNING

029/24. ARABIAN SEA. Pakistan. Charts PAK 33, 57 (INT 751), BA 38 and 707. Live depth charge firing will be conducted from 191900 till 211900 UTC Feb 24 in area bounded by following coordinates:

24-10.00N 062-45.00E
 24-10.00N 063-30.00E
 23-20.00N 063-30.00E
 23-20.00N 062-45.00E

Mariners cautioned. Cancel this msg 212100 UTC Feb 24.

030/24. ARABIAN SEA. Pakistan. Charts PAK 33, 57 (INT 751), BA 38 and 707. Missile and gunnery firing with live ammunition will be conducted between 0400 to 1700 UTC daily on 24 and 25 Feb 24 in area bounded by following coordinates:

24-24.30N 066-42.00E
 24-19.00N 066-58.00E
 24-00.00N 066-39.00E
 24-11.00N 066-27.00E

Mariners cautioned. Cancel this msg 251900 UTC Feb 24.

031/24 SELF CANCELLING. Navigational Warnings Inforce:

2022 series: 024, 027, 060, 063, 081 and 082.

2023 series: 027, 073, 117 and 126.

2024 series: 014, 022 and 030.

WPGs Inforced 2024: 06 and 14

WPGs Cancelled 2024: 10, 11, 12 and 13

TEMPORARY AND PRELIMINARY NOTICES

In Force 19 January 2024

(Former In Force List dated 22 December 2023 is cancelled)

Inforce: 92(T)/13, 92(T)/14, 51(T)/16, 136(P)/16, 150(P)/16, 173(P)/16, 83(P)/17, 99(T)/17, 115(P)/17, 129(P)/17, 140(T)/17, 169(T)/17, 176(T)/17, 184(P)/17, 101(T)/18, 131(P)/18, 27(P)/19, 55(P)/19, 73(T)/19, 78(T)/19, 108(P)/19, 110(P)/19, 112(P)/19, 173(T)/19, 234(P)/19, 87(T)/20, 95(P)/20, 111(P)/20, 134(P)/20, 160(T)/20, 176(P)/20, 04(T)/21, 06(T)/21, 46(T)/21, 69(T)/21, 109(P)/21, 111(T)/21, 124(T)/21, 156(T)/21, 15(P)/22, 20(P)/22, 25(T)/22, 38(P)/22, 39(T)/22, 48(P)/22, 56(P)/22, 82(T)/22, 113(P)/22, 139(P)/22, 03(T)/23, 24(P)/23, 25(T)/23, 42(P)/23, 43(T)/23, 46(T)/23, 53(T)/23, 65(T)/23, 68(P)/23, 114(T)/23, 117(P)/23, 120(P)/23, 132(T)/23, 140(T)/23, 144(P)/23, 145(P)/23, 146(P)/23, 147(P)/23, 154(P)/23, 155(T)/23, 160(T)/23, 161(T)/23, 165(T)/23, 168(P)/23, 172(P)/23, 173(T)/23, 04(P)/24, 19(P)/24, 20(P)/24, 21(T)/24, 22(P)/24, 23(T)/24, 27(T)/24, 28(T)/24 and 29(T)/24.

Cancelled: Nil

PART – III

CORRECTIONS TO SAILING DIRECTIONS

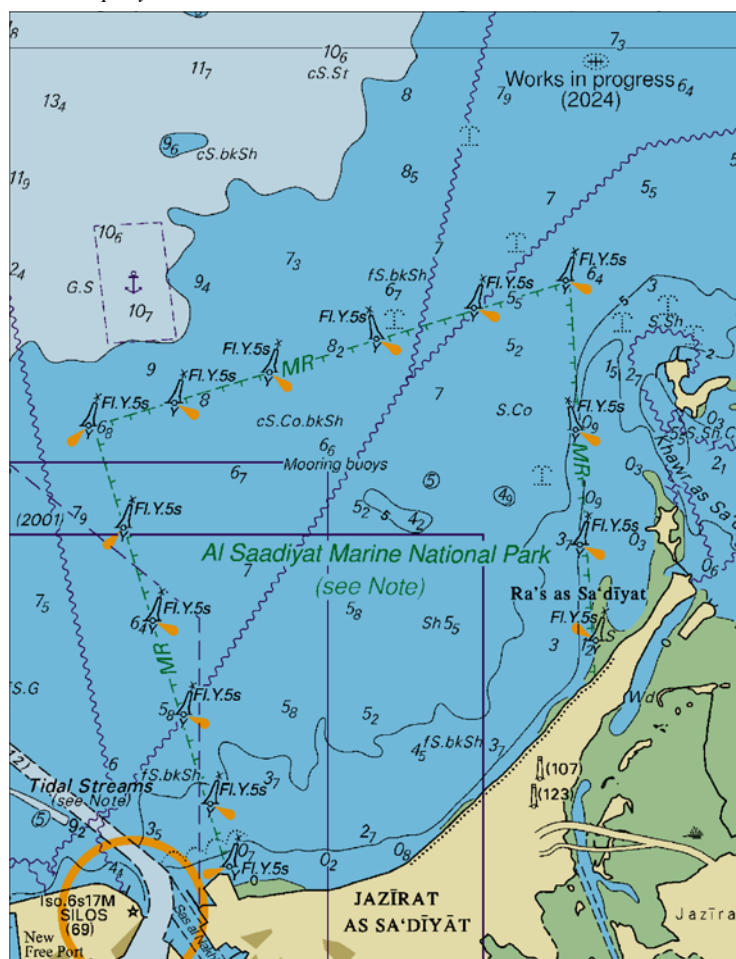
Nil

PART – IV

MARINE INFORMATION

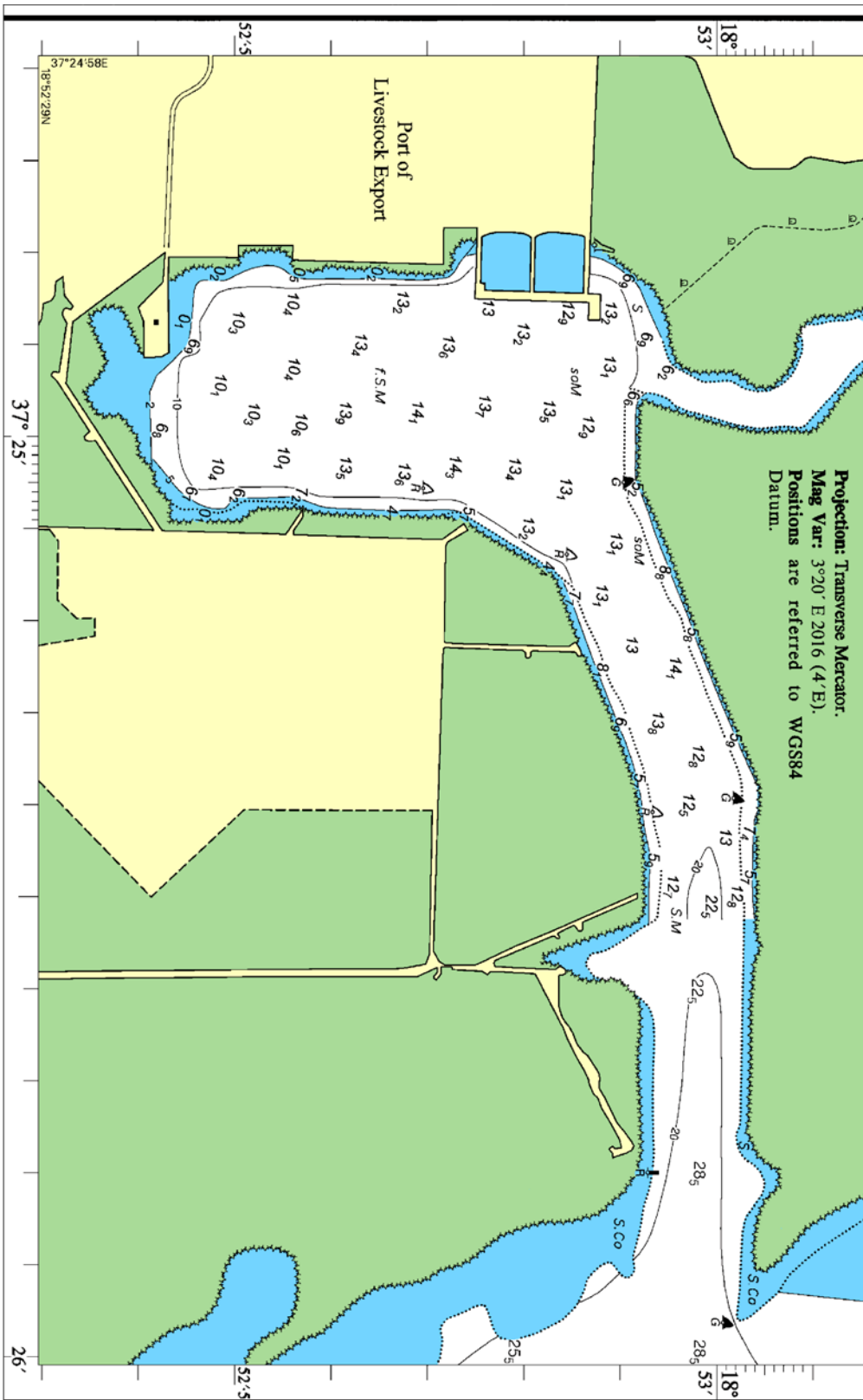
Nil

To accompany Pakistan Notice to Mariners 33/24.



Block for BA Chart No 3177

To accompany Pakistan Notice to Mariners 35/24.



Block for BA Chart No 675

NP77, Vol D Edition 2023. Weekly Edition No. 8, Dated 22 February 2024.
 Last Updates: Weekly Edition No. 7, dated 15 February 2024.

D1026-2 FR. L1, 32960	- Port Haliguen. Marina. New Breakwater. Head	47 29-37 N 3 05-94 W	Dir WR 6s	10	W10 White tower, red top R 7 8	<i>fl 1, ec 1, fl 1, ec 3.</i> Fl(2) W233°-240-5°(7-5°). Fl(2) R240-5°-299°(58-5°). Fl(2) W299°-306°(7°). Fl(2) R306°-233°(287°). Sync with D1026-4	*
D1076 FR. L1, 33850	- La Turballe. Jetée de Garlahy	47 20-56 N 2 30-86 W	Fl(2)WR 6s	..	W10 White column, red R 7 top 11	R073°-328°(255°), W328°-073°(105°)	*
D1532-6 ES. I, 00820	- Ría. Dársena de Axpe. Submerged Breakwater. Head	43 18-62 N 2 58-92 W	Fl(2+1)R 10s	11	1 Red framework tower, green band 8	<i>fl 0-5, ec 0-7, fl 0-5, ec 2-1, fl 0-5, ec 5-7</i>	*
D2067-3 PT. I, 110-5	- Harbour Entrance. Ldg Lts 046-5°. Front	40 08-83 N 8 52-21 W	Oc R 3s	9	2 White column, red bands 5	<i>ec 1.</i> R039°-055°(16°). TE 2023	*
D2067-35 PT. I, 110-6	- Harbour Entrance. Ldg Lts 046-5°. Rear	40 08-87 N 8 52-16 W	Oc R 3s	15	6 White column, red bands 5	<i>ec 1.</i> R039°-055°(16°). TE 2023	*
D2160-45	WEST COAST. SINES Remove from list; deleted						
D2681-5 PT. I, 780	- Urzelina	38 38-64 N 28 07-64 W	Fl R 6s	9	6 Red structure on white wall, yellow bands 4	<i>fl 1-5.</i> TE 2023	*
D2799-4	ISLA DE GRAN CANARIA Remove from list; deleted						
D3174-3	PORT DE LOMÉ	6 08-07 N 1 17-19 E	Lit	*
D3174-41	-	6 08-21 N 1 17-01 E	Lit	*
D4190 FR. L2, 32380	Cabo San Juan	1 10-40 N 9 20-56 E	Fl(2)W 10s	24	13 Red framework tower 18	<i>fl 0-1, ec 2-4, fl 0-1, ec 7-4.</i> TE 2024	*
D4191	Cabo San Juan	1 10-95 N 9 21-79 E	F W	TE 2024	*
D7297-0901	SC2	29 48-34 N 32 32-60 E	Fl W 10s	5	9 Red ◯ on red and white striped beacon	..	*
D7404-1	- Khawr Al Qulay'ah. Ldg Lts 323°43'. Rear. 370m from front. No 2	26 11-16 N 50 39-26 E	IQ W 8s	9	.. Δ on ∇, on metal tripod 8	<i>fl 3</i>	
D7671	- Khowr-e-Deyreh. Ldg Lts 043°. Front. A	29 01-76 N 50 48-69 E	Oc W 6s	4	9 White pile beacon	..	*
D7671-1	- Khowr-e-Deyreh. Ldg Lts 043°. Rear. 0-6M from front. B	29 02-24 N 50 49-19 E	Iso W 4s	8	8 White pile beacon	..	
D7671-4	- No 24	28 59-86 N 50 50-12 E	Fl(3)R 12s	4	7 Red pile beacon	..	*